

Collection MOUNTAIN

Unglasierte Feinsteinzeug-Fliesen, gesprenkelt,
in ebenflächiger oder polierter Ausführung

Unglazed porcelain stoneware tiles, speckled,
with smooth or polished surface

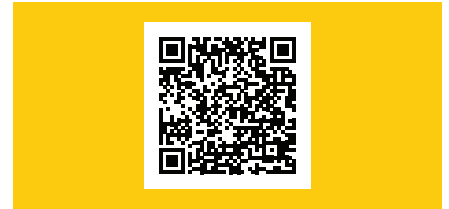
Carreaux grès cérame, non-émaillés, moucheté,
avec surface lisse mate ou polie

[gemäß | according to | selon DIN EN 14411 BI₉]

Bevorzugte Anwendungsbereiche: Repräsentative Böden und Wände z. B. in Einkaufszentren, Banken, Hotels, Gaststätten, Schwimmbäder, Eingänge etc.

Examples of appropriate fields of application: shopping centres, banks, hotels, restaurants, swimming pools, lobbies etc.

Domaines d'application appropriés: Représentatif sols et murs dans les centres commerciaux, banques, hôtels, restaurants, piscines, entrées etc.



»Salt'n Pepper«



1051 Kalk,
gesprenkelt R 10
Lime,
speckled R 10
Calcaire,
moucheté R 10



1052 Kiesel,
gesprenkelt R 10
Pepple,
speckled R 10
Galet,
moucheté R 10



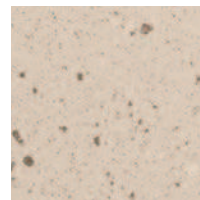
1054 Mondstein,
gesprenkelt R 10
Moon stone,
speckled R 10
Pierre de lune,
moucheté R 10



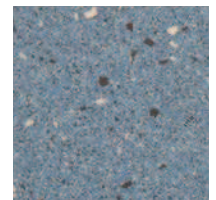
»Grani«



1071 Kalk,
gesprenkelt R 10
Lime,
speckled R 10
Calcaire,
moucheté R 10



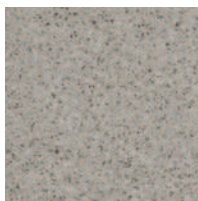
1072 Kiesel,
gesprenkelt R 10
Pepple,
speckled R 10
Galet,
moucheté R 10



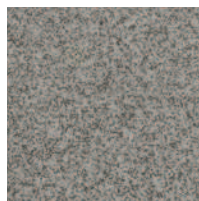
1074 Mondstein,
gesprenkelt R 10
Moon stone,
speckled R 10
Pierre de lune,
moucheté R 10



1055 Koralle,
gesprenkelt R 10
Coral,
speckled R 10
Corail,
moucheté R 10



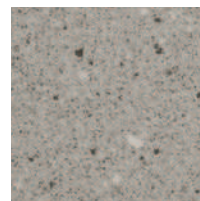
1058 Granit,
gesprenkelt R 10
Granite,
speckled R 10
Granite,
moucheté R 10



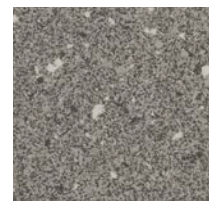
1057 Basalt,
gesprenkelt R 10
Basalt,
speckled R 10
Basalte,
moucheté R 10



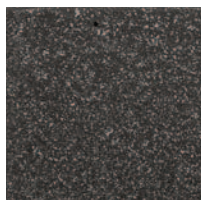
1075 Koralle,
gesprenkelt R 10
Coral,
speckled R 10
Corail,
moucheté R 10



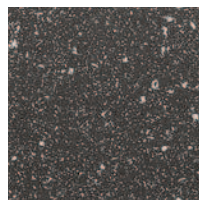
1078 Granit,
gesprenkelt R 10
Granite,
speckled R 10
Granite,
moucheté R 10



1077 Basalt,
gesprenkelt R 10
Basalt,
speckled R 10
Basalte,
moucheté R 10



1060 Schiefer,
gesprenkelt R 10
Slate,
speckled R 10
Schiste,
moucheté R 10



1080 Schiefer,
gesprenkelt R 10
Slate,
speckled R 10
Schiste,
moucheté R 10



Die Angaben zu rutschhemmenden Eigenschaften gelten **nicht** für die polierte Ausführung.

The slip-resistant feature applies only onto the smooth-surfaced tiles and accessories, **not** to polished surface.

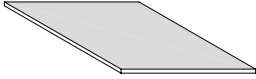
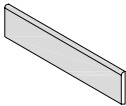
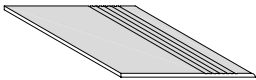
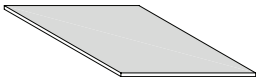
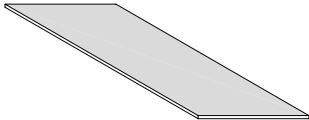
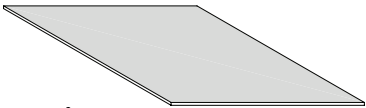
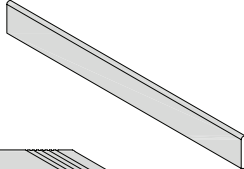
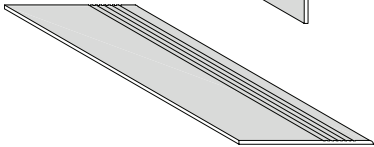
Le classement concernant les propriétés de non-glissance **n'est pas** valable pour la surface polie.

Unglasierte Feinsteinzeug-Fliesen, gesprenkelt,
in ebenflächiger oder polierter Ausführung
Unglazed porcelain stoneware tiles, speckled,
with smooth or polished surface
Carreaux grès cérame, non-émaillés, moucheté,
avec surface lisse mate ou polie

[gemäß | according to | selon DIN EN 14411 BI_a]

Farbe | Colour | Coloris

1051 1054
1052 1072 1055
1057 1077 1060 1074
1058 1078 1071 1080 1075

	3030 Steinzeug-Fliese Dry pressed tile Carreau grès cérame 297 x 297 x 8,5 mm	○ ○ ○ ○ ○ 185 186 187 190 192
	3038 Sockel Skirting Plinthe 297 x 72 x 8,5 mm	○ ○ ○ ○ 224 224 224 224
	3035 Treppenfliese Stair tile Marche 297 x 297 x 8,5 mm	○ ○ ○ ○ 228 228 228 228
	303010 Steinzeug-Fliese (poliert) Dry pressed tile (polished) Carreau grès cérame (poli) 297 x 297 x 8 mm	○ ○ ○ ○ ○ 194 195 196 198 198
	3060 Steinzeug-Fliese Dry pressed tile Carreau grès cérame 297 x 597 x 8,5 mm	○ 193
	6060 Steinzeug-Fliese Dry pressed tile Carreau grès cérame 597 x 597 x 8,5 mm	○ 196
	6038 Sockel Skirting Plinthe 593 x 72 x 8,5 mm	○ 226
	6035 Treppenfliese Stair tile Marche 597 x 297 x 8,5 mm	○ 233
<ul style="list-style-type: none"> ● = Standardprogramm Standard Material Gamme standard ○ = Auf Anfrage Upon request Sur demande □ = Palettenrabatt Pallet discount Rabais sur la Palette 		Preisgruppe / Stück Price Group / Piece Groupe de Prix / Pièce Preisgruppe / m ² Price Group / m ² Groupe de Prix / m ²
Farben siehe S. 118 For colours please see p. 118 Coloris voir p. 118		

	Stück pro m ² /lfd.m incl. Fuge Pieces per m ² /r. m. incl. joints Pièces par m ² /ml joints incl.	Stück pro Paket Pieces per bundle Pièces par paquet	Stück pro Palette Pieces per pallet Pièces par palette	m ² pro Palette m ² per pallet m ² par palette	Gewicht ca. kg per 1000 Stück Approx. weight in KG/1000 pcs Poids env. kg par 1000 pièces	Gewicht ca. kg pro Palette Approx. weight in KG/pallet Poids env. kg par palette	Gewicht ca. kg pro m ² bzw. lfd.m Approx. weight in KG/m ² or r.m. Poids env. kg par m ² /ml
3030	11	15	660	60	1632	1077	17,95
3038	3,33	24			450	579	1,49
3035	3,33	15			1632		5,44
303010	11	15	660	50	1587	872	17,4
3060	5,55	9	288	51,84	3440	991	19,1
6060	2,78	5	100	35,97	8658	865	24,16
6038	1,67	7			960		1,6
6035		9			3440		5,75